

## VIA 2.0 : DotGEO

*DotGEO* is a VIA: Variable Image Abstractor presentation. Using source imagery from an abstract painting by my late mother, Dorothy Burnham, VIA takes image sections of the painting, and remixes it's shapes and forms to create new ever-changing abstractions.



Screenshots of *DotGEO*

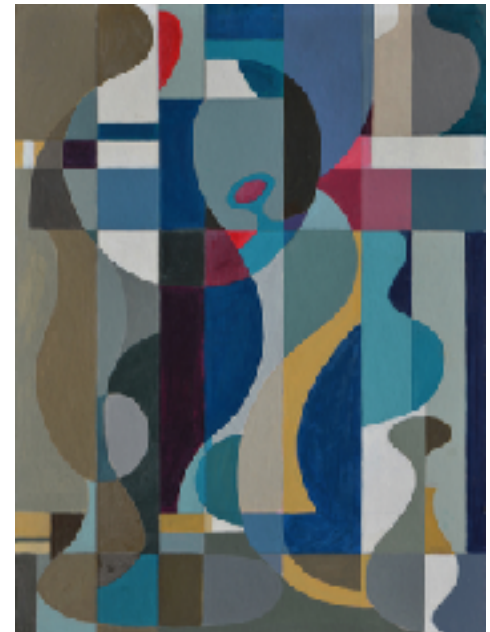
---

### VIA: Variable Image Abstractor

In terms of visual memory, images float within our mind; juxtaposing, overlapping, replacing one another. VIA: Variable Image Abstractor externalizes these visions into a new kind of time based visual experience. Depending on the source imagery, VIA can produce fragments of reality, total abstraction, or a mix of the two. Sometimes Impressionistic, other times Cubist or Expressionistic, I like to think of the resulting imagery as a visual representation of thought.

VIA runs realtime on a Mac computer, and is coded in the Processing programming language. I recently updated it, from the original version developed over 15 years ago in FutureBASIC for Mac.

In searching for new ways to present several images simultaneously, I began thinking about automating a structured, yet random process of image transformation. I developed VIA, a stream-of-consciousness type of image engine. VIA displays an image, then systematically replaces parts of the image with other images read from an image library. The reading process is random, and designed in a way that repetition is unlikely. The end result is imagery constructing and deconstructing itself, to create an ever evolving composition, which can run indefinitely.



*Untitled* by Dorothy M. Burnham  
circa 1970

---

**Sheriann Ki Sun Burnham** is a Long Beach visual artist and designer working in mixed media/digital fine art, graphic design, and creative production. Since graduating from CSULB in 1982, with a B.A. in Studio Art, Sheri has balanced a dual career in fine art and design.

Sheri has used computers in her artistic practice for over 35 years, blending new technologies with a traditional art background. Sheri's fine art has been exhibited and published nationally and internationally since the mid-1980's. In design, Sheri partners with individuals, businesses and organizations in shaping design complexities into clear visual solutions.